

TO:
USER:


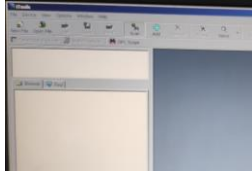
Parts EURO THERM
Model 3504通訊卡
S/N U002-4015-930-09-HK/U002-2818-711-10-HK

Receiving Date
Checking Date

Detail of Trouble:

Item	Description	Photo	Note
1	偶爾無法連網 something can't connect		
2			

Description of Service Work :

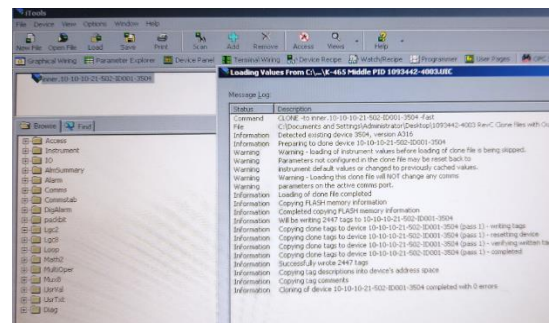
Item	Description	Photo	Note
外觀檢測 Exterior Inspection side	無明顯損傷/PASS		
上機檢測 On-board testing	連接電腦後,出現偶爾會連不上電腦之情況 After connecting to the computer, occasionally it may not be able to connect to the computer		經過檢測發現,部分零件參數異常 After testing, it was found that some parts parameters were abnormal

Repair content

Item	Description	Action	Note
1	不良零件/Bad parts	Replaced	
2	線路板/circuit board	Cleaned	

INSPECTION

Item	Description	Note
1	將EUROTHERM 裝機,連接電源開機顯示正常/ Install EURO THERM, connect to the power supply, and the display is normal	
2	連接電腦用軟體掃描,可以連接網路並找到EUROTHERM/ Connect to the computer and scan with software, you can connect to the Internet and find EURO THERM	
3	使用軟體測試,沒有顯示ERROR/NO ERROR	



REMARK

--